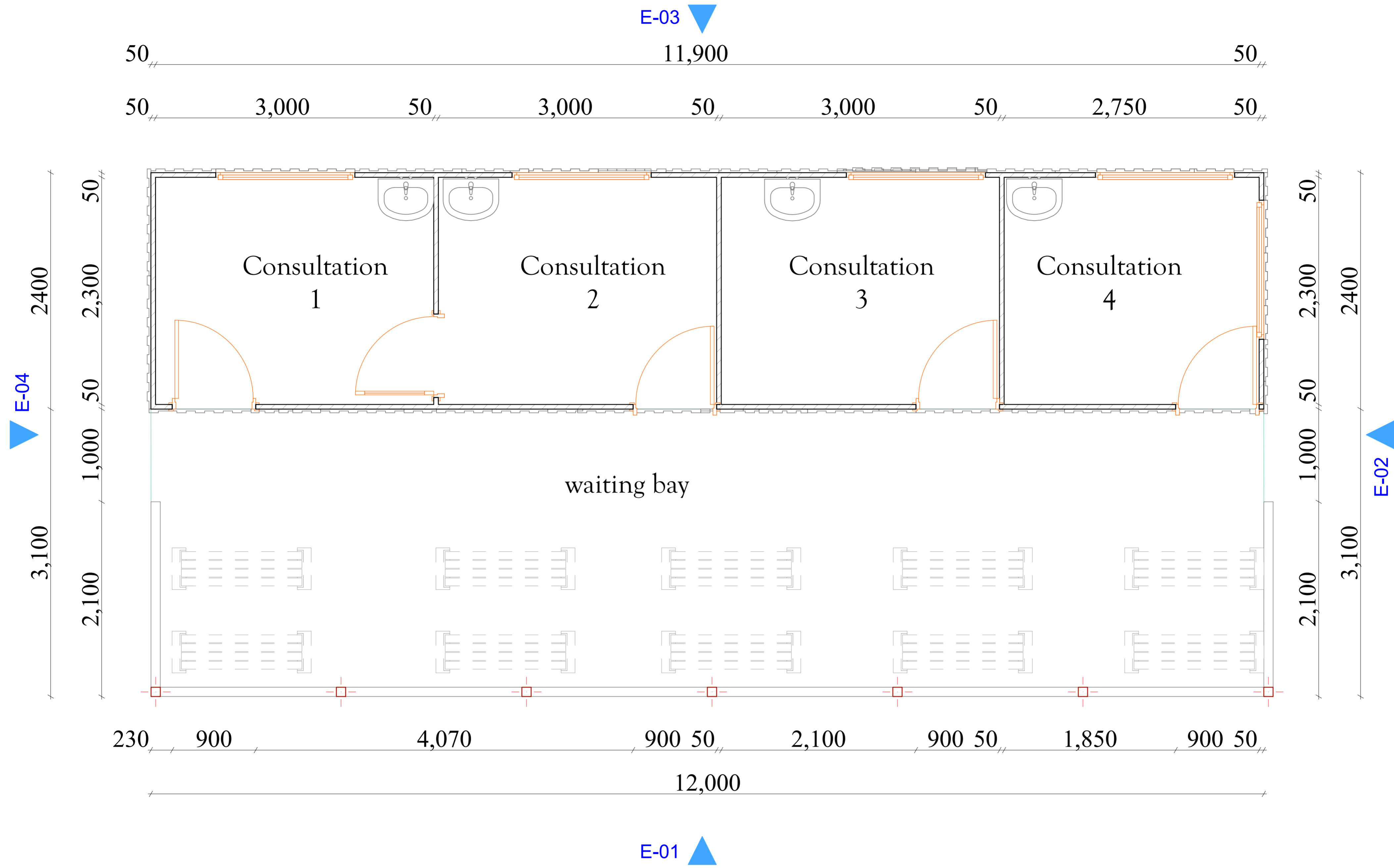
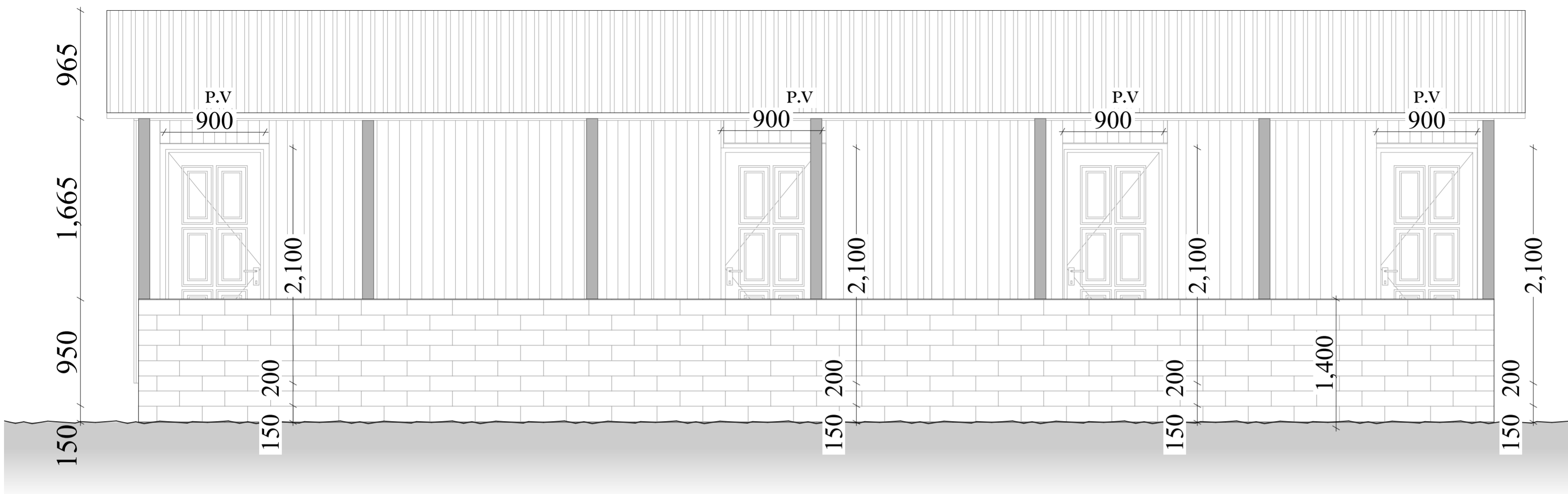


# ONGATA RONGAI CONTAINER CLINIC

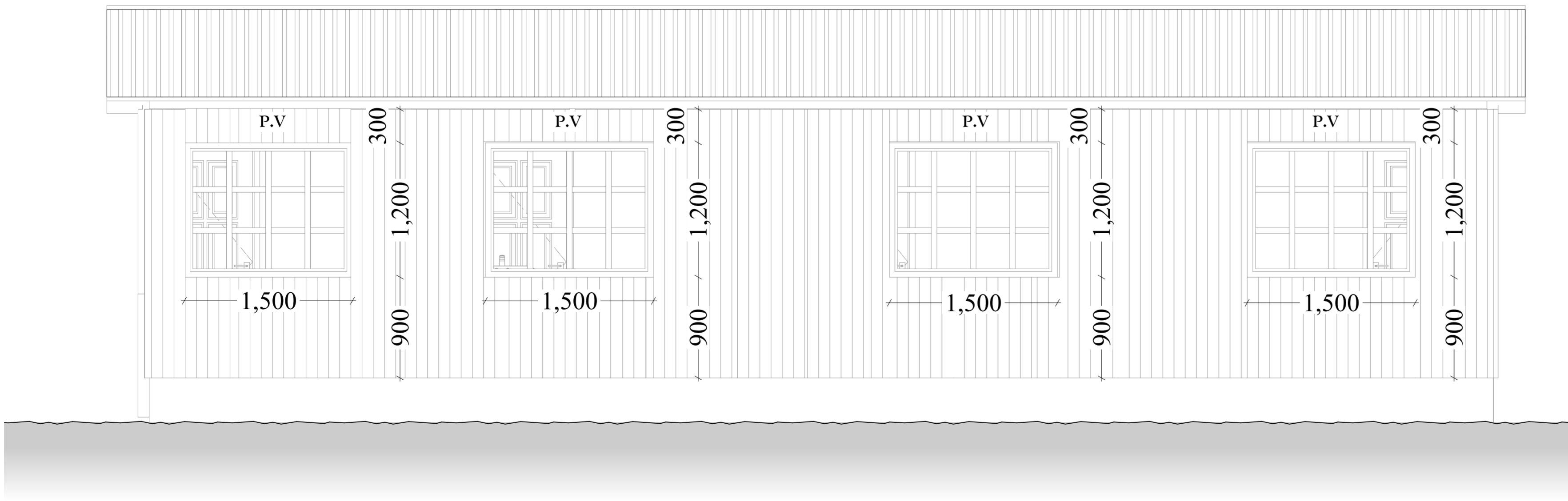


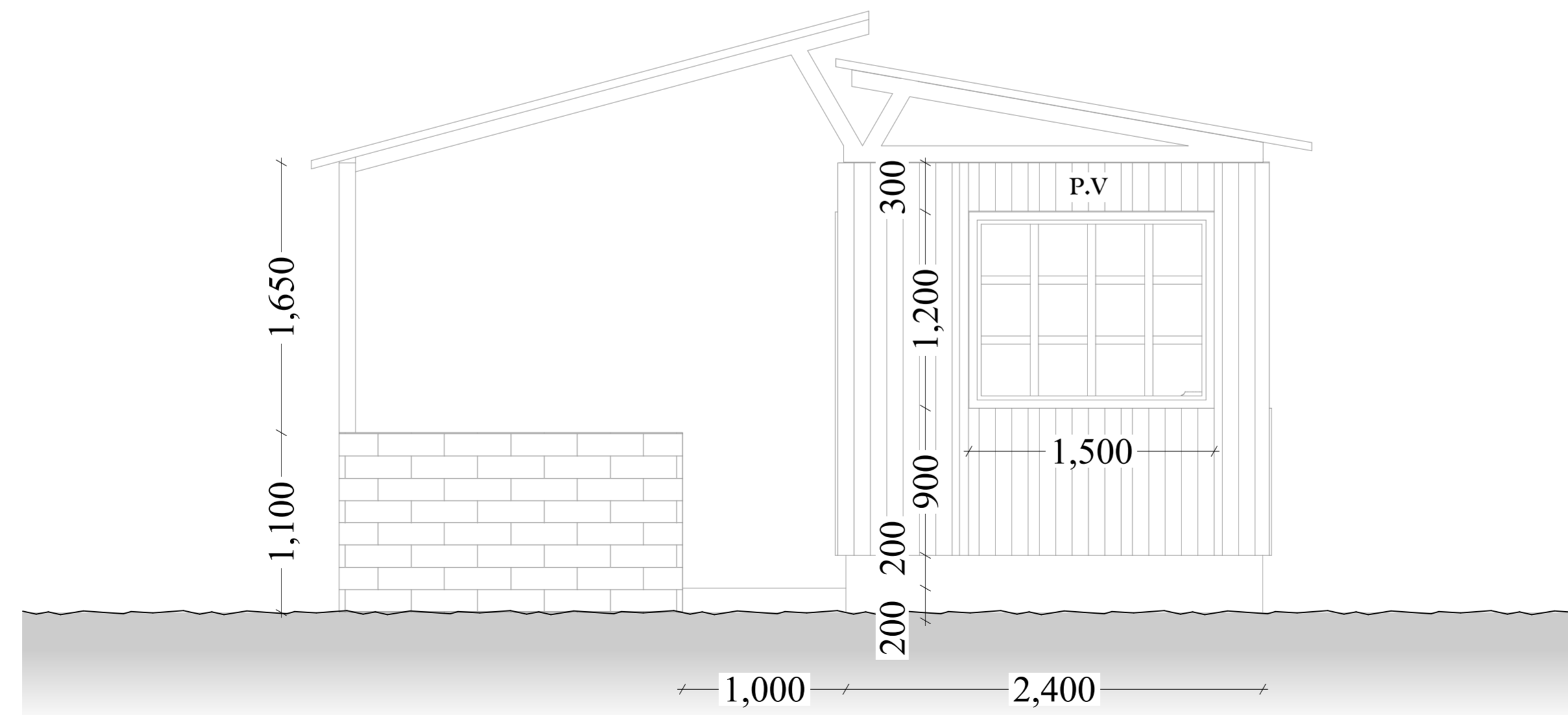
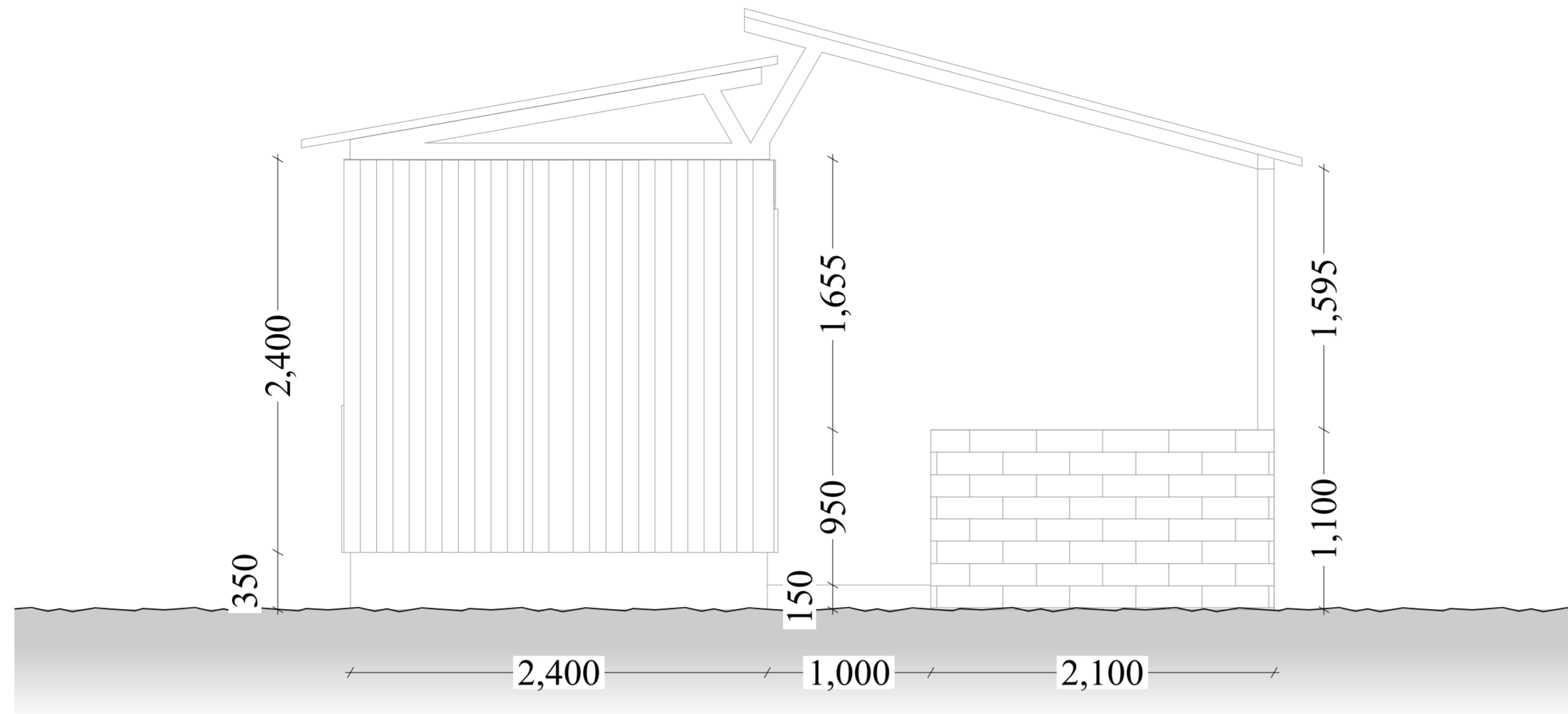
# ONGATA RONGAI CONTAINER CLINIC



## NOTE:

- Floor finish**  
Tiled with 450\*450 mm thick ceramic tiles
- Skirting**  
100mm high ceramic tile skirting.
- Walls**  
Gypsum partitionings painted with 3 coats of medicryl anti bacterial emulsion paint
- Ceiling**  
Gypsum ceiling painted with 3 coats of medicryl anti bacterial emulsion paint
- Waiting bay area**  
200mm thick and 1400mm high masonry wall painted internally and keyed externally to detail
- Roof**  
75\*75\*2mm thick RHS column erected to support the roof  
IT 5 sheets with gutters and down pipes
- External**  
600\*600 mm thick concrete paving slabs around the building





## NOTE:

### Floor finish

Tiled with 450\*450 mm thick ceramic tiles

### Skirting

100mm high ceramic tile skirting.

### Walls

Gypsum partitionings painted with 3 coats of medicryl anti bacterial emulsion paint

### Ceiling

Gypsum ceiling painted with 3 coats of medicryl anti bacterial emulsion paint

### Waiting bay area

200mm thick and 1400mm high masonry wall painted internal and keyed externally to detail

75\*75\*2mm thick RHS column erected to support the roof

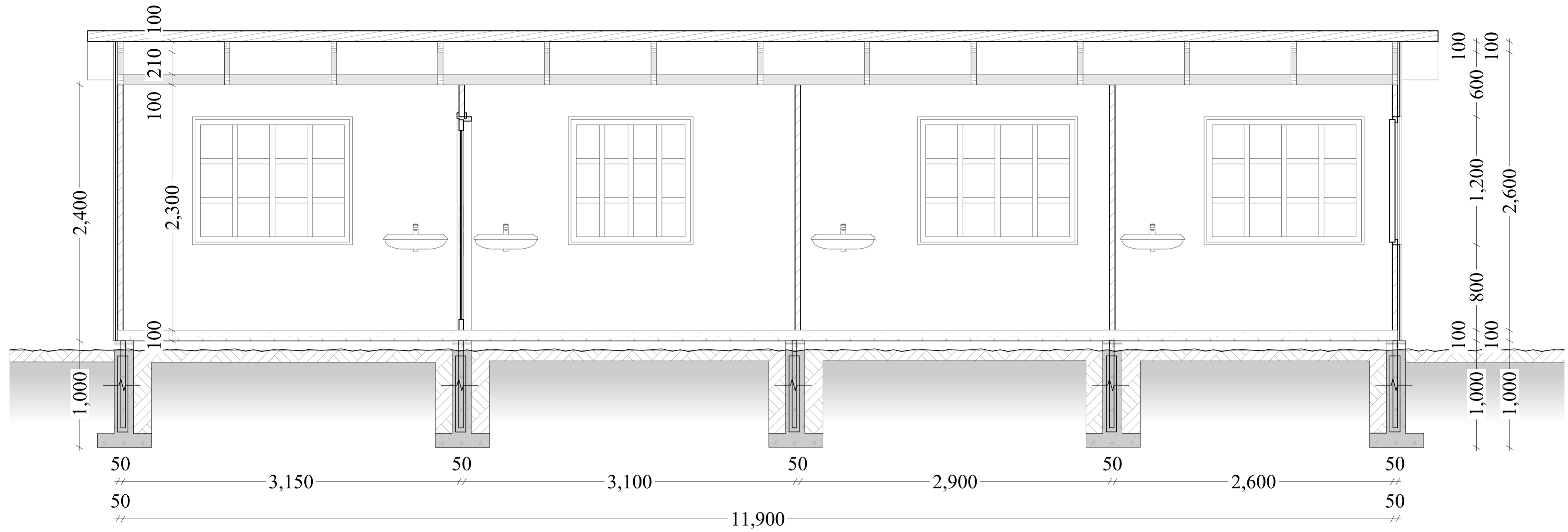
### Roof

IT 5 sheets with gutters and down pipes

### External

600\*600 mm thick concrete paving slabs around the building

# ONGATA RONGAI CONTAINER CLINIC



NOTE: FOUNDATION DEPTH IS 1M DEEP