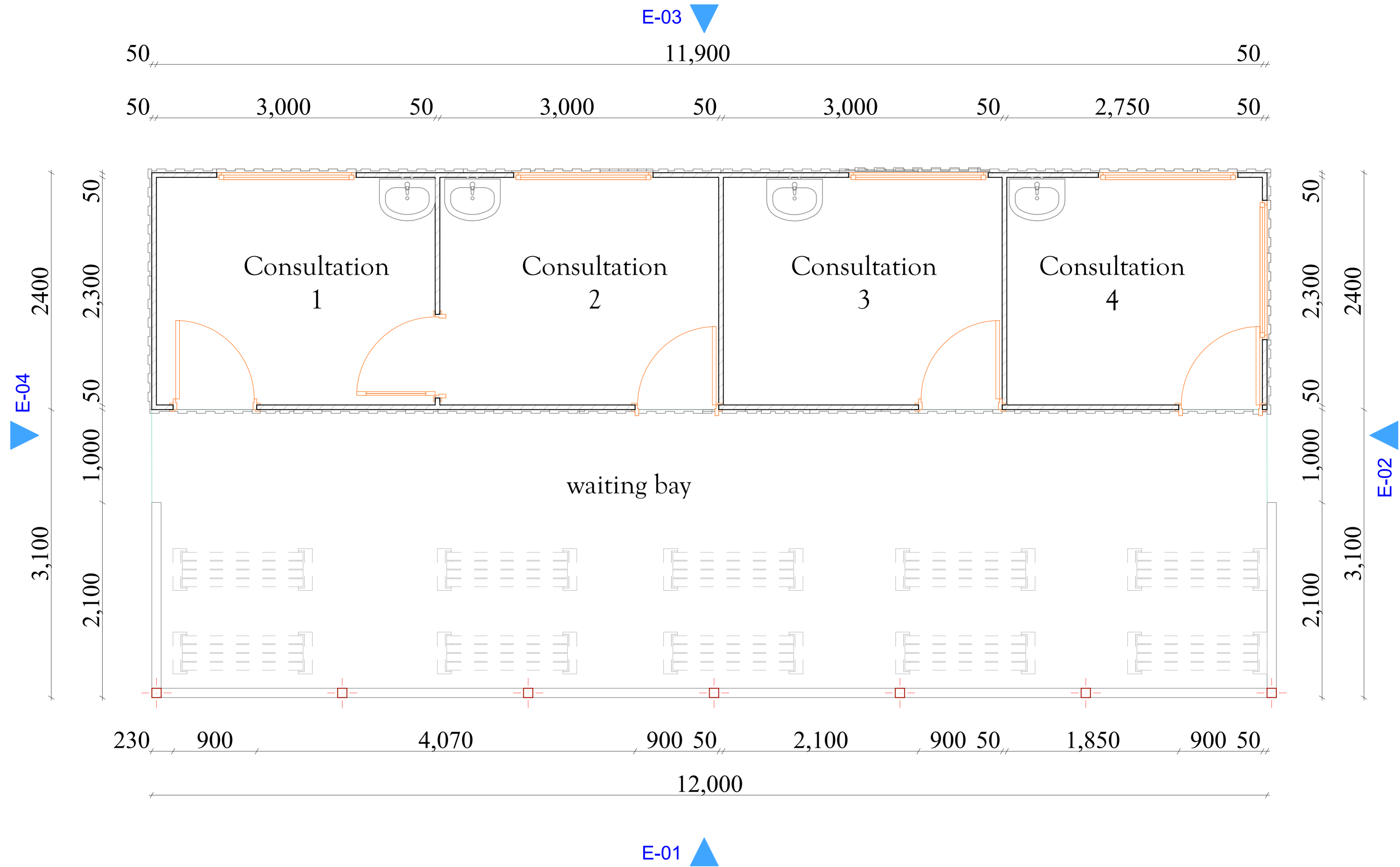
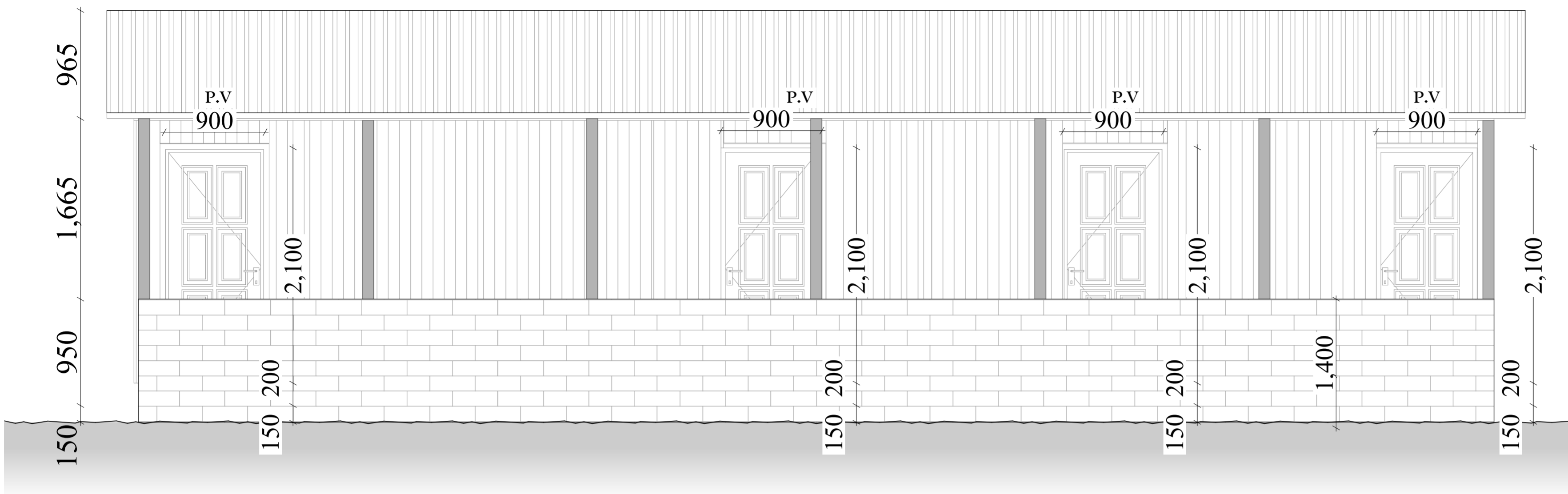


MATHARE NORTH CONTAINER CLINIC

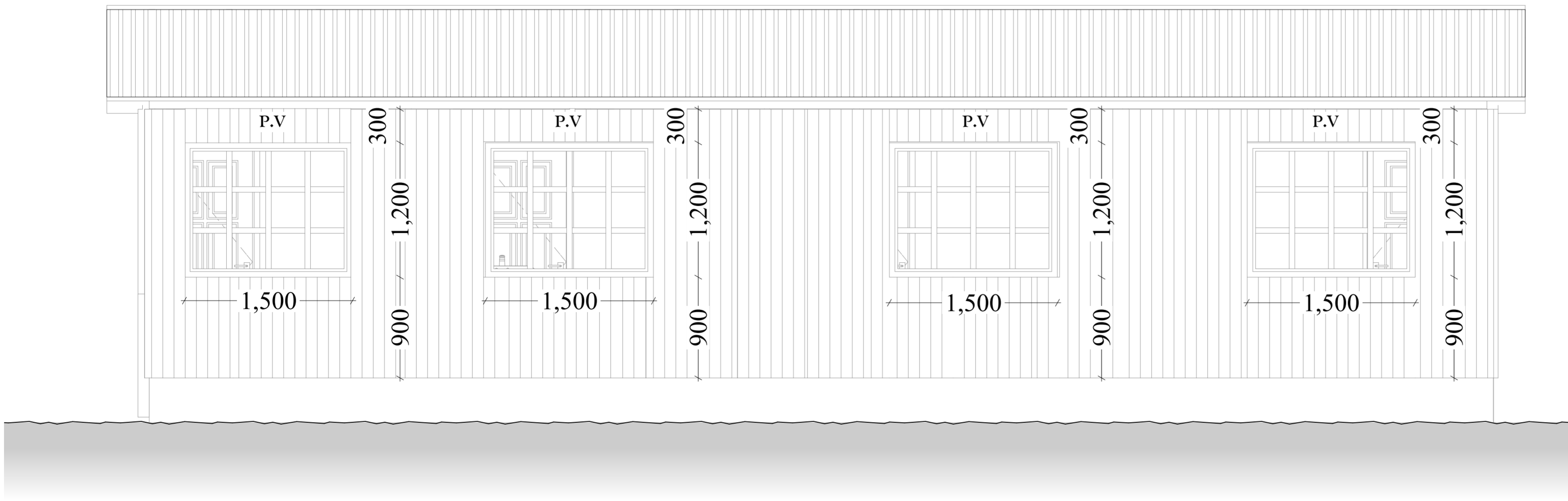


MATHARE NORTH CONTAINER CLINIC

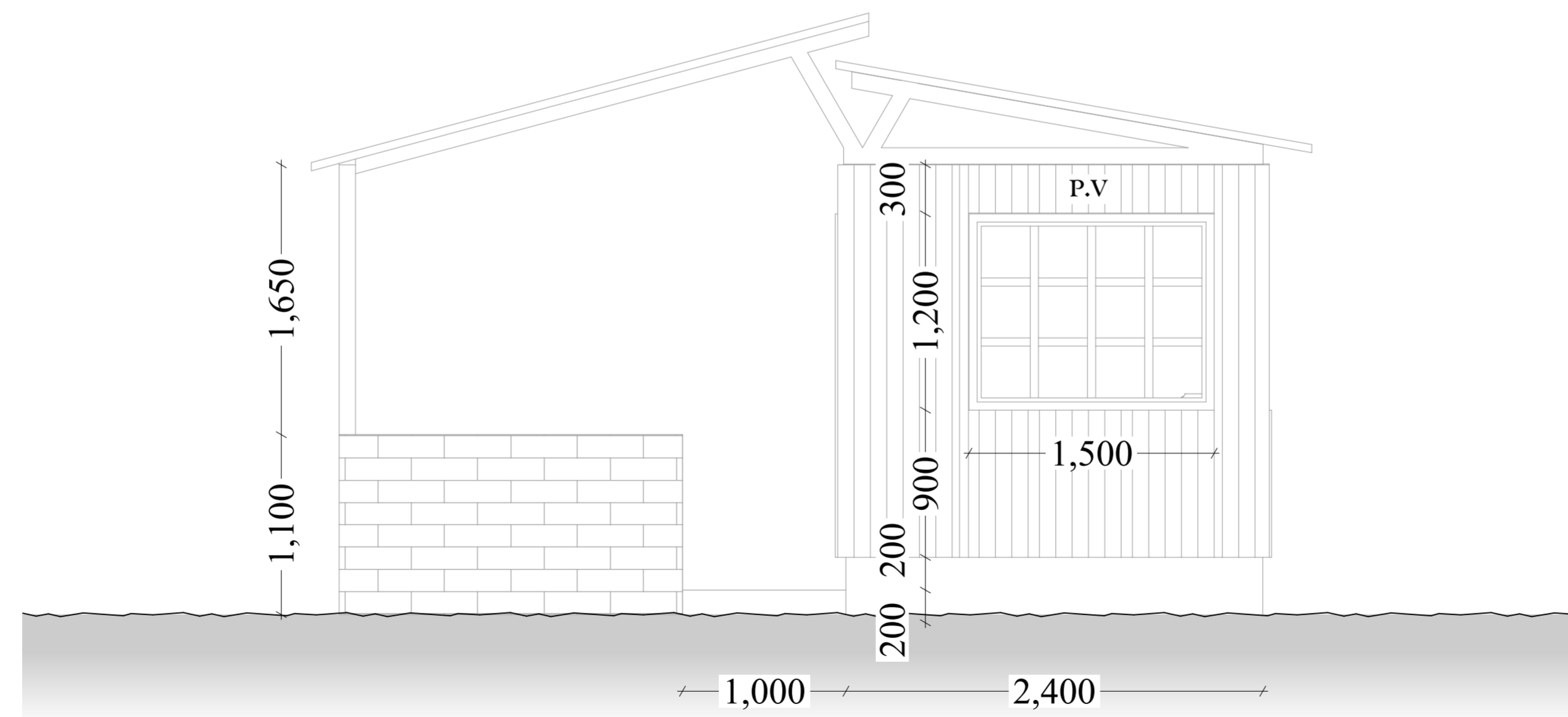
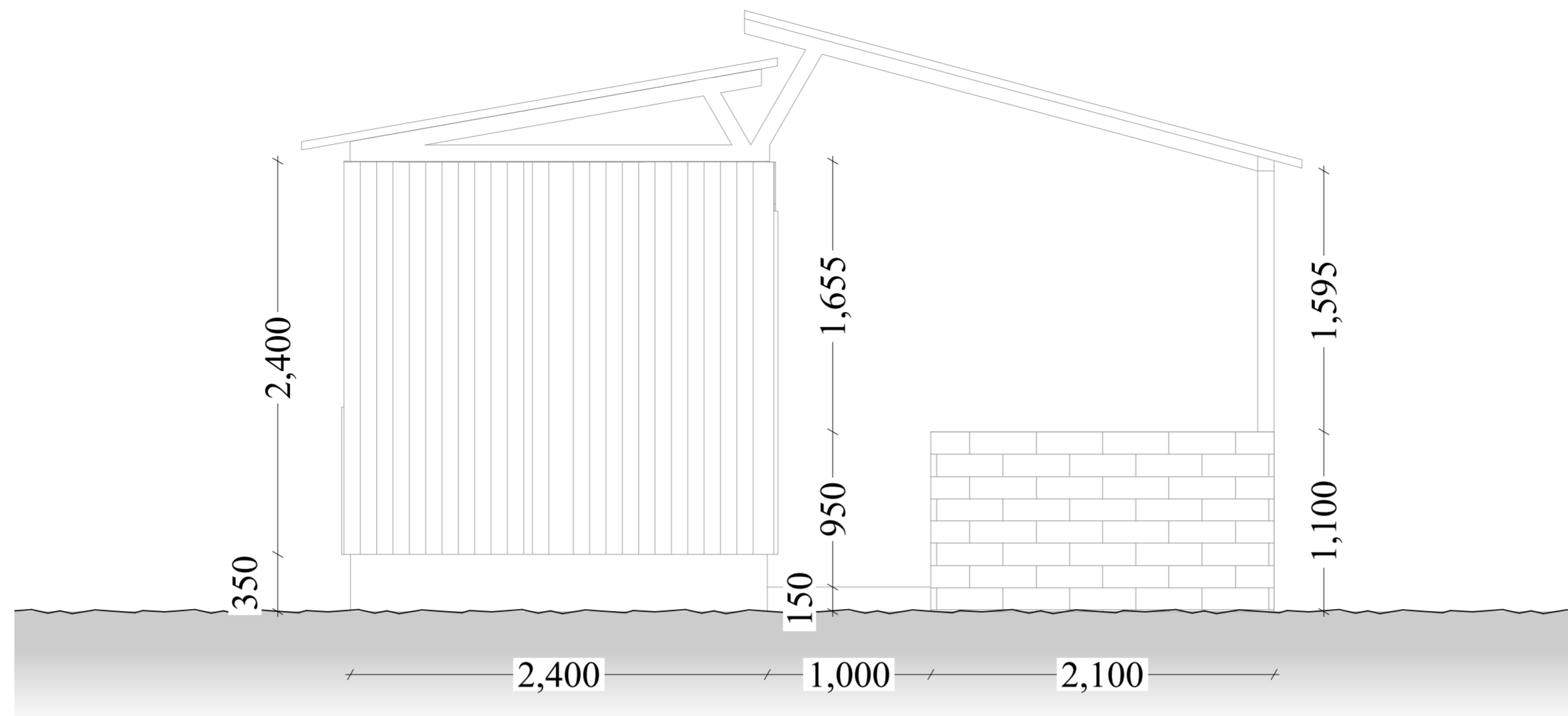


NOTE:

- Floor finish**
Tiled with 450*450 mm thick ceramic tiles
- Skirting**
100mm high ceramic tile skirting.
- Walls**
Gypsum partitionings painted with 3 coats of medicryl anti bacterial emulsion paint
- Ceiling**
Gypsum ceiling painted with 3 coats of medicryl anti bacterial emulsion paint
- Waiting bay area**
200mm thick and 1400mm high masonry wall painted internal and keyed externally to detail
- Roof**
75*75*2mm thick RHS column erected to support the roof
IT 5 sheets with gutters and down pipes
- External**
600*600 mm thick concrete paving slabs around the building



MATHARE NORTH CONTAINER CLINIC



NOTE:

Floor finish

Tiled with 450*450 mm thick ceramic tiles

Skirting

100mm high ceramic tile skirting.

Walls

Gypsum partitionings painted with 3 coats of medicryl anti bacterial emulsion paint

Ceiling

Gypsum ceiling painted with 3 coats of medicryl anti bacterial emulsion paint

Waiting bay area

200mm thick and 1400mm high masonry wall painted internal and keyed externally to detail

75*75*2mm thick RHS column erected to support the roof

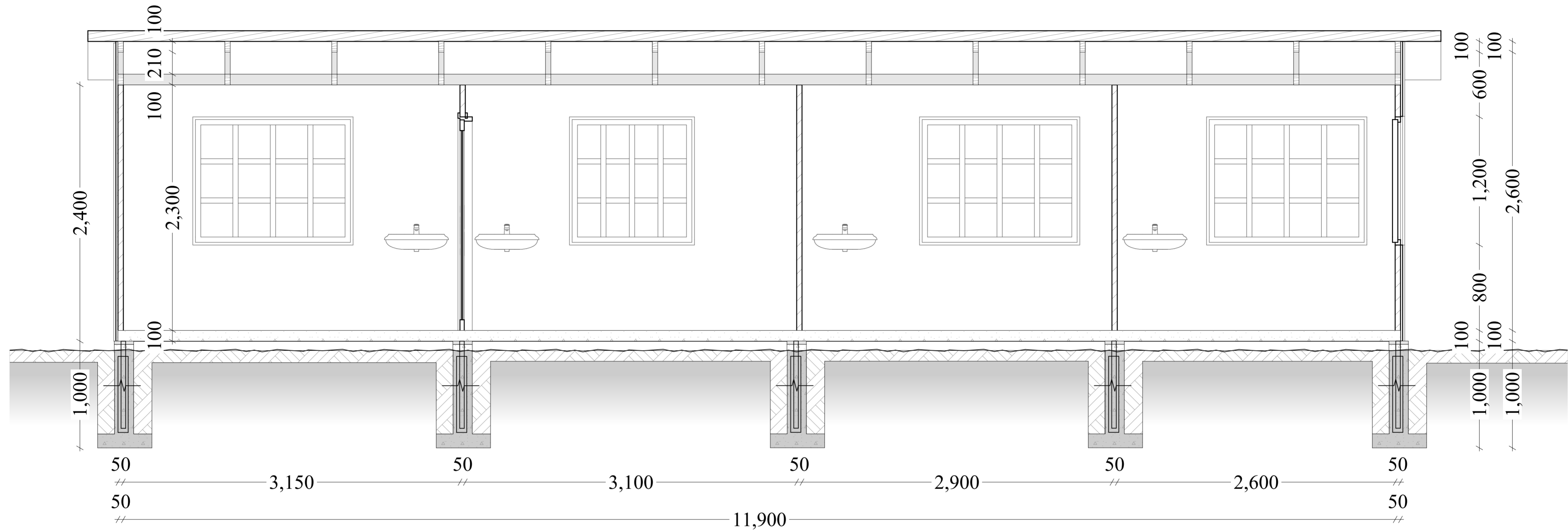
Roof

IT 5 sheets with gutters and down pipes

External

600*600 mm thick concrete paving slabs around the building

MATHARE NORTH CONTAINER CLINIC



NOTE: FOUNDATION DEPTH IS 1M DEEP